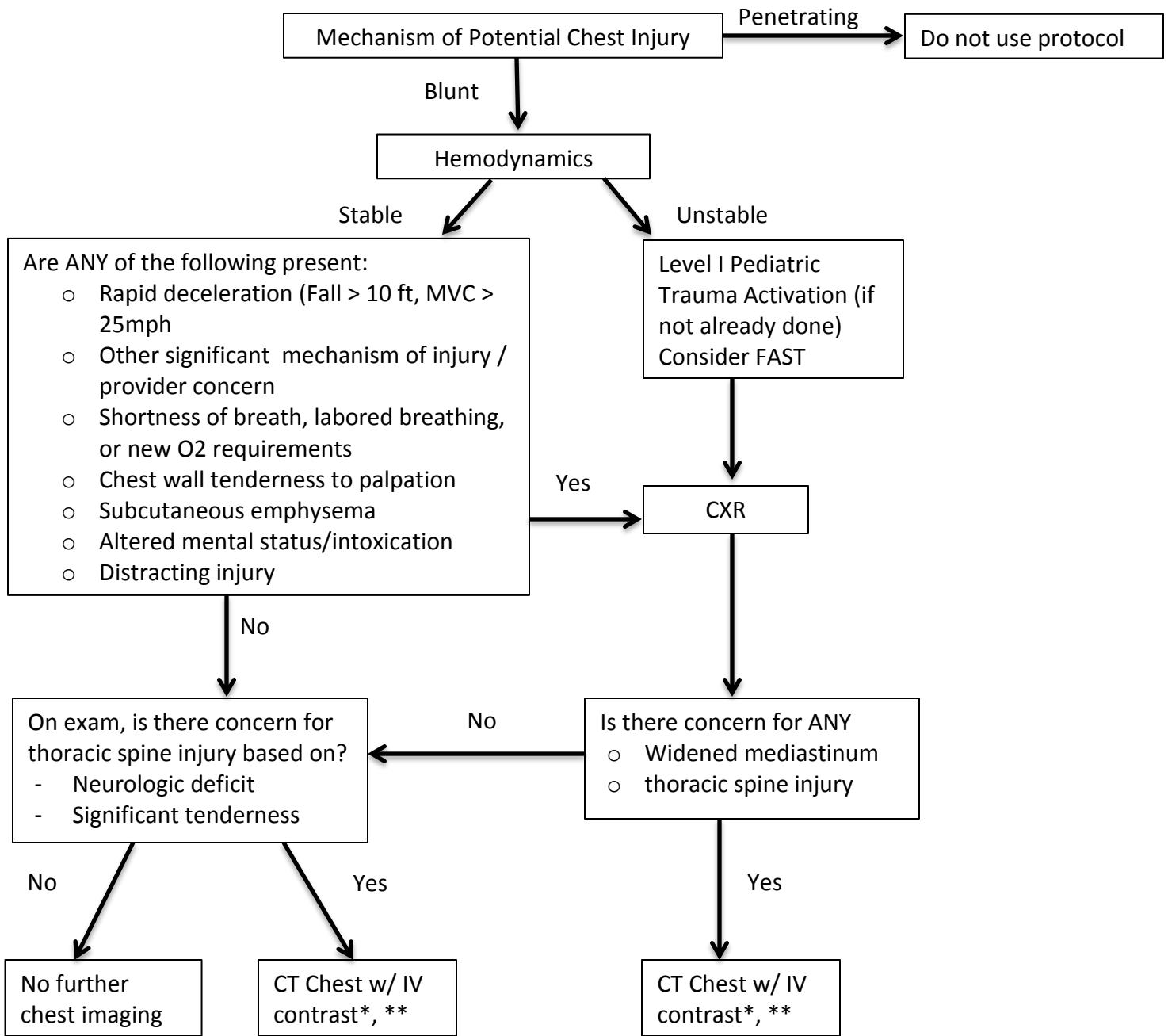


**Pediatric Thoracic Blunt Trauma Algorithm**



This algorithm is designed to be used as a guide and is not to preclude clinical judgement.

\* In general, the chest CT is primarily useful to evaluate for a traumatic aortic injury. If there is concern for this based on the mechanism of injury, hemodynamics, different BP's in upper extremities, or CXR a CT with IV contrast should be obtained to assess for aortic injury.

\*\* If there is concern for thoracic spine injury and a CT is being ordered to evaluate the T spine, it is ok to order CT chest with spine recons as the radiation increment is negligible