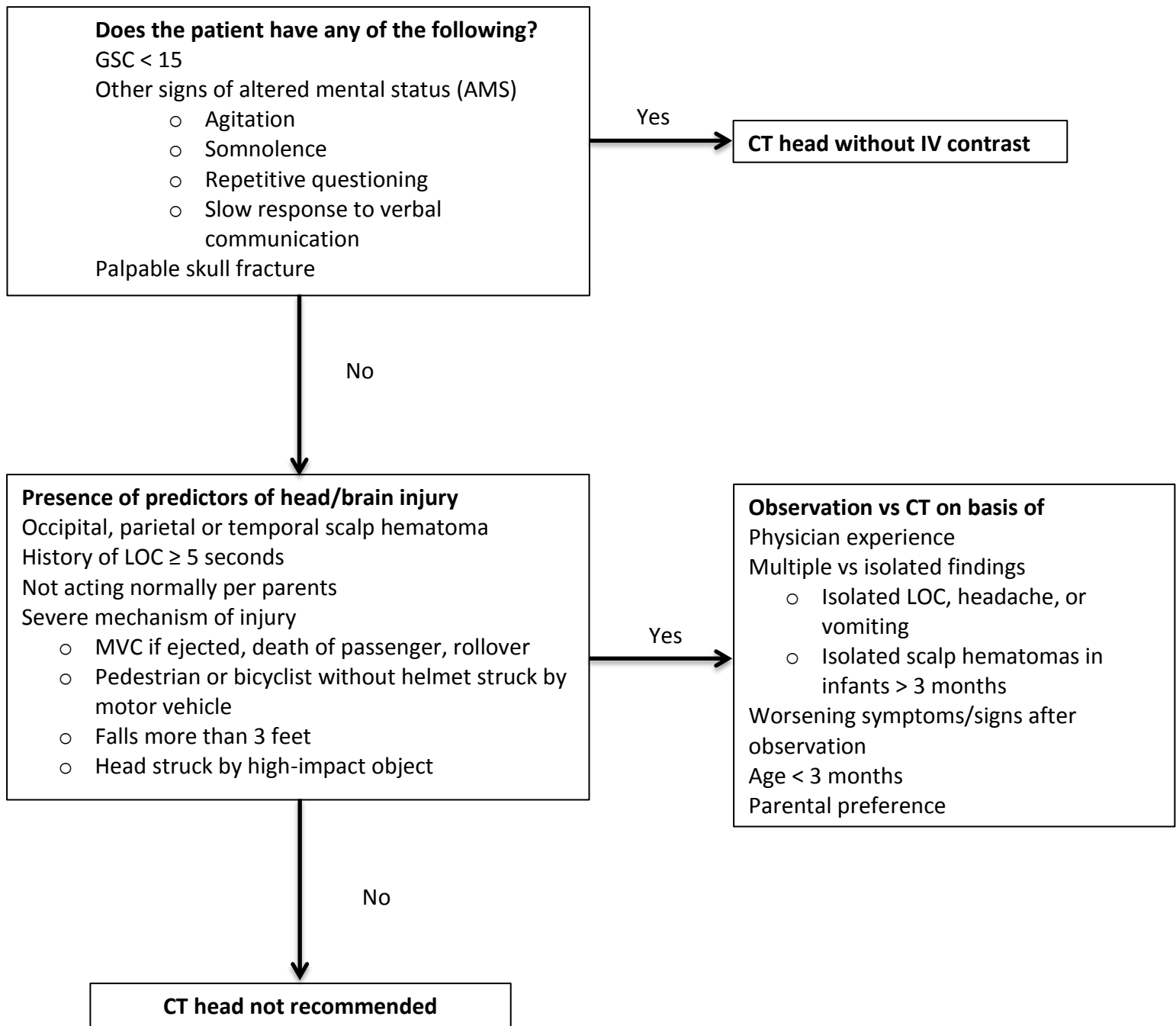


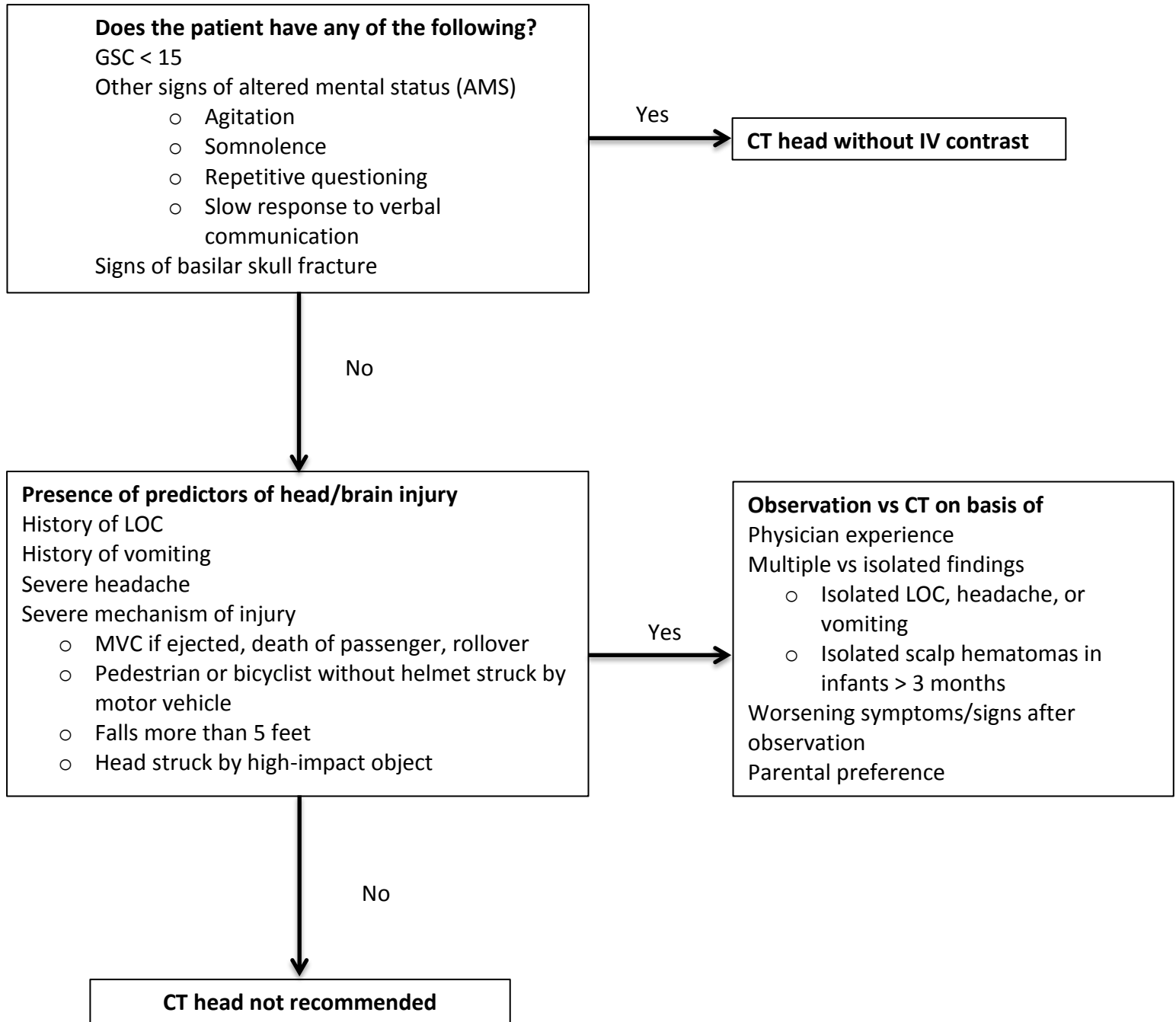
**Pediatric Head Blunt Trauma Algorithm (age < 2 yo)**



\* This algorithm is designed to be used as a guide and is not to preclude clinical judgement.

\*\* Online calculator <https://www.mdcalc.com/pecarn-pediatric-head-injury-trauma-algorithm>

**Pediatric Head Blunt Trauma Algorithm (age 2 and older)**



\* This algorithm is designed to be used as a guide and is not to preclude clinical judgement.

\*\* Online calculator <https://www.mdcalc.com/pecarn-pediatric-head-injury-trauma-algorithm>