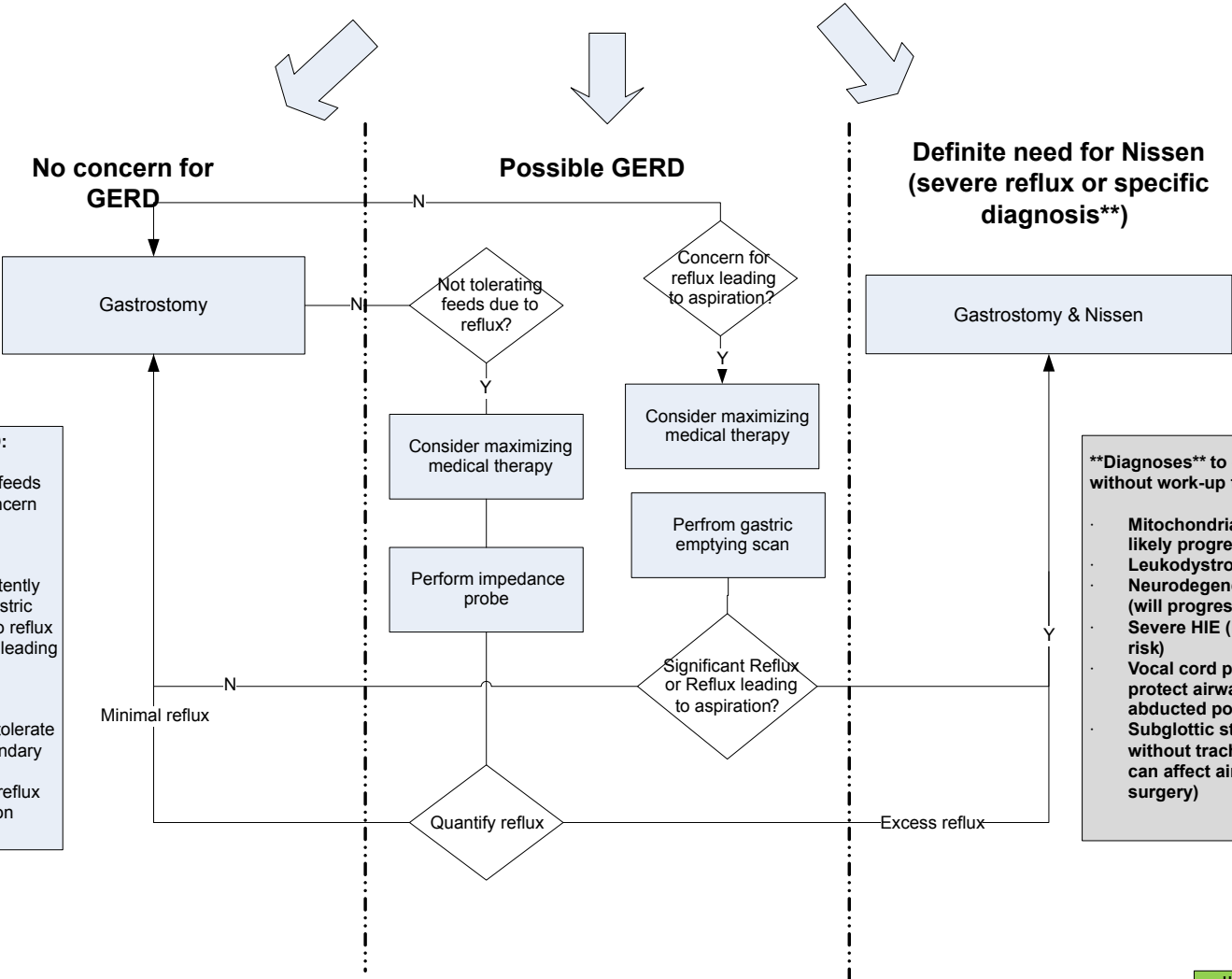


# Feeding Tube Placement (G-tube vs. G-tube w/Nissen)\*\*

Patient identified as needing g -tube



**No Concern for GERD:**

- Child is thriving on nasogastric bolus feeds without clinical concern for reflux

**GERD**

- Child is not consistently tolerating bolus gastric feeds secondary to reflux
- Concern for reflux leading to aspiration

**Nissen:**

- Child is unable to tolerate gastric feeds secondary to reflux
- Definite history of reflux leading to aspiration

**\*\*Diagnoses\*\* to consider Nissen without work-up for reflux:**

- Mitochondrial cytopathy (will likely progress)
- Leukodystrophy (may progress)
- Neurodegenerative conditions (will progress)
- Severe HIE (likely aspiration risk)
- Vocal cord paralysis (can't protect airway particularly if in abducted position)
- Subglottic stenosis with or without tracheostomy (reflux can affect airway reconstruction surgery)